



**JUMP  
PARKS  
EUROPE**  
BY ETAN

Data Sheet  
EN-TD-2019-01006  
Pro-Cube®  
Rev 03, 04-2020

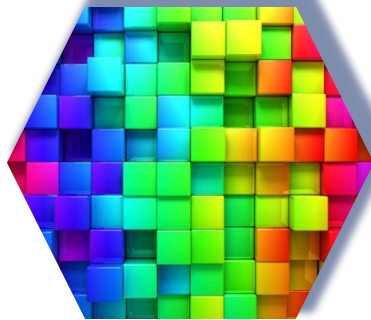


# Pro-Cube®

## The ultimate Foam



Pro-Cube® has been used over decades and has proven its superb properties in Gyms as well as in Trampoline parks.



Pro-Cube® comes in 6 standard color tones. Customized colors are available on request.



The unique patented process of packing reduces the transport volume of Pro-Cube® to less than 10% of this of standard foam cubes.



## Jump Parks Europe

At Jump Parks Europe we continuously challenge ourselves to offer to the market disruptive solutions as an alternative to common products used in daily operation and maintenance of your park. From this broad portfolio of novelties we have ready for launch we present you the Pro-Cube® foam pit blocks.



### Pro-Cube®

Pro-Cube® are foam cubes from a superior material perfectly suitable for use in pits for gyms, trampoline parks, extreme sports arena's and more. Pro-Cube® is available in 6 standard color tones orange, green, violet, red, grey, yellow and bleu. For those who want Pro-Cube® to support their corporate identity and related color scheme optional customized colors can be made available





## Specification

Pro-Cube®			
Property	Unit	Requirements	Method of research
Foam Density	kg/m <sup>3</sup>	24,5 - 28,5	EN ISO 845:2010
CLD hardness 40%	kPa	3,3 - 5	EN ISO 3386-1:2000
Resilience min.	%	35	EN ISO 8307:2008
Tensile strenght min.	kPa	120	EN ISO 1798:2009
Elongation at breake min.	%	150	EN ISO 1798:2009
Compression set max.	%	5	EN ISO 1856:2018

## Certifications

Pro-Cube® comes with a Hygienic Certificate. The material meets FMVSS 302 (DIN 75200 / ISO 3795) burn performance rate.

## Durability



Pro-Cube® has been used and has proven its superb properties over decades. Next to a broad application in gymnastics Pro-Cube® has proven its suitability in Trampoline pits over the last years. The picture left shows the condition of Pro-Cube® after two years of intensive use in a trampoline park.

## Quantity

When ordering Pro-Cube® ( 20 x 20 x 20 cm) for your park please follow the math below.

For trampoline supported pits:

$$N = L \times W \times D \times 90$$

For ground-based foam pits:

$$N = L \times W \times D \times 85$$

L= Foam pit length in meters

W = Foam pit width in meters

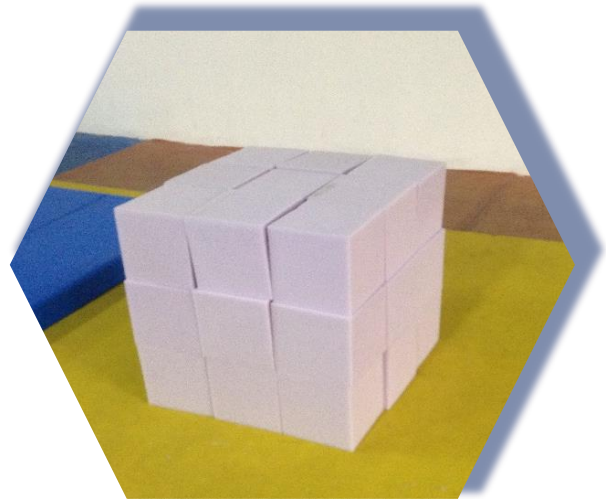
D = Foam pit dept in meters

N = Number of Pro-Cube® blocks to order



## Service

For an optimal functioning, your foam pit needs to be inspected daily for irregularities and left behinds. Please make sure you fluff your foam pit once per week and replace damaged foam blocks. By keeping your foam pit clean and sound you ensure a safe and pleasant use of this challenging and fun attraction in your park.



## Transport

Due to a unique patented process of packing the transport volume of Pro-Cube® is reduced to less than 10% of this of standard foam cubes.

Pro-Cube® Foam may be stored in compressed condition for a maximum period of 2 months.

Next to reduction of transport costs up to 70% this patented method of packaging contributes to a 70% reduction of CO2 for transport.

